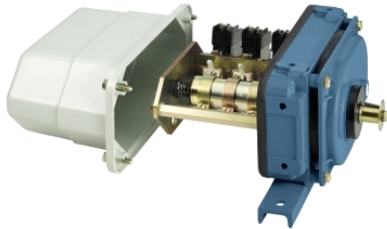


## XR2AA03K40

1-stup. gran.sklopka s vijč.vezom XR2,za teške  
uvjete-3 C/O-alu kućište



### Glavno

Range of product	XR and XF
Product or component type	Single-stage heavy duty screw limit switch
Device short name	XR2
Product specific application	Liquid level control in pumping systems Position control of moving parts of hoisting or materials handling equipment
Material	Aluminium alloy (body housing) Plastic (cover)
Type of operator	Drive shaft, end fittings with sprocket key and washer
Maximum revolution speed	300 rpm of input drive shaft
Theoretical number of turns	40 of input drive shaft
Number of poles	1

### Komplementarno

Mechanical durability	10000000 cycles
Number of turns	<= 6 of threaded shaft
Threaded shaft screw pitch	4 mm
Operating finger radius	40 mm
Length of developed helical travel	4 mm
Differential snap over angle	30 ° contact actuators measured at finger
Repeat accuracy	0.02 % on the tripping point
Number of teeth	16 (pinion C) 26 (pinion A) 49 (pinion B) 59 (pinion D)
Actual number of turns	41.697 (input drive shaft)
Contacts type and composition	3 C/O
Contact operation	Snap action
[Ie] rated operational current	A300, AC-15 (Ue = 240 V, Ie = 3 A) conforming to EN/IEC 60947-5-1 Q300, DC-13 (Ue = 250 V, Ie = 0.27 A) conforming to EN/IEC 60947-5-1
[Ithe] conventional enclosed thermal current	10 A
[Ui] rated insulation voltage	500 V conforming to EN/IEC 60947-1 600 V conforming to CSA C22.2 No 14
[Uimp] rated impulse withstand voltage	6 kV conforming to EN/IEC 60947-1
Resistance across terminals	<= 25 MOhm
Short-circuit protection	10 A cartridge fuse type gG
Connections - terminals	Screw clamp terminals, connection capacity: 2 x 1.5 mm <sup>2</sup> with or without cable end Screw clamp terminals, connection capacity: 2 x 2.5 mm <sup>2</sup> without cable end
Electrical durability	10000000 cycles AC-15 50/60 Hz inductive at 12 V, 70 VA, operating rate 3600 cyc/h, load factor 0.5 EN/IEC 60947-5-1 10000000 cycles AC-15 50/60 Hz inductive at 127 V, 270 VA, operating rate 3600 cyc/h, load factor 0.5 EN/IEC 60947-5-1 10000000 cycles AC-15 50/60 Hz inductive at 220 V, 290 VA, operating rate 3600 cyc/h, load factor 0.5 EN/IEC 60947-5-1 10000000 cycles AC-15 50/60 Hz inductive at 24 V, 120 VA, operating rate 3600 cyc/h, load factor 0.5 EN/IEC 60947-5-1 10000000 cycles AC-15 50/60 Hz inductive at 380 V, 300 VA, operating rate 3600 cyc/h, load factor 0.5 EN/IEC 60947-5-1 10000000 cycles AC-15 50/60 Hz inductive at 48 V, 180 VA, operating rate 3600 cyc/h, load factor 0.5 EN/IEC 60947-5-1 10000000 cycles AC-15 50/60 Hz inductive at 500 V, 300 VA, operating rate 3600 cyc/h, load factor 0.5 EN/IEC 60947-5-1

Informacije dane u ovoj dokumentaciji sadrže opće i/ili tehničke karakteristike o performansama ovdje sadržanih proizvoda.  
Ova dokumentacija nije namijenjena kao zamjena za niti bi se trebala koristiti za određivanje prikladnosti ili pouzdanosti predmetnih proizvoda za konkretne korisničke primjene.  
Svaki takav korisnik ili integrator dužan je provesti odgovarajuću i poplunu analizu rizika, procjenu i ispitivanje proizvoda u odnosu na odgovarajuću specifičnu primjenu ili uporabu istog.  
Niti društvo Schneider Electric Industries SAS niti bilo koje od njegovih povezanih poduzeća ili podružnica neće preuzeti obvezu ili snositi odgovornost za pogrešnu upotrebu ovdje sadržanih informacija.



3000000 cycles DC-13 resistive at 12 V, 100 W, operating rate 3600 cyc/h, load factor 0.5 EN/IEC 60947-5-1  
3000000 cycles DC-13 resistive at 220 V, 80 W, operating rate 3600 cyc/h, load factor 0.5 EN/IEC 60947-5-1  
3000000 cycles DC-13 resistive at 24 V, 120 W, operating rate 3600 cyc/h, load factor 0.5 EN/IEC 60947-5-1  
3000000 cycles DC-13 resistive at 440 V, 45 W, operating rate 3600 cyc/h, load factor 0.5 EN/IEC 60947-5-1  
3000000 cycles DC-13 resistive at 48 V, 110 W, operating rate 3600 cyc/h, load factor 0.5 EN/IEC 60947-5-1

---

Cable entry	2 entries tapped for Pg 13 cable gland, clamping capacity: 9...12 mm
Product weight	6 kg

---

## Okolina

---

standards	EN/IEC 60947-5-1
protective treatment	TC
ambient air temperature for operation	-25...70 °C
ambient air temperature for storage	-40...70 °C
shock resistance	50 gn for 11 ms
vibration resistance	> 5 gn (10...55 Hz)
IP degree of protection	IP54 conforming to EN/IEC 60529

---

## Offer Sustainability

---

Not Green Premium product	Not Green Premium product
Will be Compliant on 4Q2013	Will be Compliant on 4Q2013 Will be Compliant on 4Q2013

---

## Contractual warranty

---

Warranty period	18 months
-----------------	-----------

---