

XCC2506PS81SBN

apsolutni enkoder Ø58 1-okret.–čvrsta osovina 6mm–
uvl-izv. 13-bitni binarni



Glavno

| | |
|------------------------------|-------------------------------------|
| Range of product | OsiSense XCC |
| Encoder type | Single turn absolute encoder |
| Device short name | XCC |
| Product specific application | - |
| Diameter | 58 mm |
| Shaft diameter | 6 mm |
| Shaft type | Solid shaft |
| Resolution | 8192 points |
| Electrical connection | 1 male connector M23 radial 12 pins |
| Output stage | Type SB |
| Type of output stage | SSI 13-bit binary |
| [Us] rated supply voltage | 11...30 V DC |
| Enclosure material | Zamak |

Komplementarno

| | |
|--------------------------|---|
| Shaft tolerance | G7 |
| Residual ripple | 500 mV |
| Maximum revolution speed | 9000 rpm |
| Shaft moment of inertia | 10 g.cm ² |
| Torque value | 0.004 N.m |
| Maximum load | 10 daN radial 5 daN axial |
| Output frequency | 100...1000 kHz |
| Current consumption | 0...100 mA no-load |
| Protection type | Reverse polarity protection Short-circuit protection |
| Maximum output current | 20 mA |
| Physical interface | RS422 |
| Output level | High level: 2 V minimum 20 mA |
| Surge withstand | 1 kV level 2 IEC 61000-4-5 |
| Base material | Aluminium |
| Shaft material | Stainless steel |
| Type of ball bearings | 6000ZZ1 |
| Product weight | 0.49 kg |

Okolina

| | |
|---------------------------------------|--|
| marking | CE |
| ambient air temperature for operation | -20...90 °C |
| ambient air temperature for storage | -30...95 °C |
| IP degree of protection | IP65 IEC 60529 |
| vibration resistance | 10 gn (10...2000 Hz) IEC 60068-2-6 |
| shock resistance | 30 gn (11 ms) IEC 60068-2-27 |
| resistance to electrostatic discharge | 4 kV contact discharge level 3 IEC 61000-4-2 8 kV air discharge level 3 IEC 61000-4-2 |
| resistance to electromagnetic fields | 10 V/m level 3 IEC 61000-4-3 |
| resistance to fast transients | 1 kV signal ports level 3 IEC 61000-4-4 2 kV power ports level 3 IEC 61000-4-4 |

Informacije dane u ovoj dokumentaciji sadrže opće opise i/ili tehničke karakteristike o performansama ovdje sadržanih proizvoda.
Ova dokumentacija nije namijenjena kao zamjena za niti bi se trebala koristiti za određivanje prikladnosti ili pouzdanosti predmetnih proizvoda za konkretne korisničke primjene.
Svaki takav korisnik ili integrator dužan je provesti odgovarajuću i potpunu analizu rizika, procjenu i ispitivanje specifičnu primjenu ili uporabu istog.
Niti društvo Schneider Electric Industries SAS niti bilo koje od njegovih povezanih poduzeća ili podružnica neće preuzeti obvezu ili snositi odgovornost za pogrešnu upotrebu ovdje sadržanih informacija.

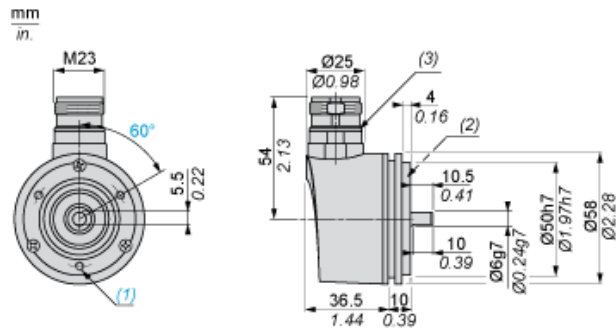
Offer Sustainability

| | |
|---|---|
| Not Green Premium product | Not Green Premium product |
| Compliant - since 0701 - Schneider Electric declaration of conformity | Compliant - since 0701 - Schneider Electric declaration of conformity |
| Reference not containing SVHC above the threshold | Reference not containing SVHC above the threshold |

Contractual warranty

| | |
|-----------------|-----------|
| Warranty period | 18 months |
|-----------------|-----------|

Dimensions

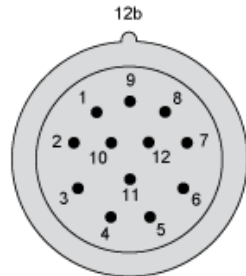


- (1) 3 M4 holes at 120° on 42 PCD, depth: 10 mm
- (2) Collar XCCRB1 mounted
- (3) Nitrile seal

Wiring Diagram

M23, 12-pin Connector, Anticlockwise Connections

Male Connector on Encoder



| Pin number | 1 | 2 | 3 | 4 | 5 | 6 | 7 | 8 | 9 | 10 | 11 | 12 |
|---------------|-----|--------|-------|---|------------------|---|---|-----|---|--------|-------|----|
| Signal Supply | 0 V | Data + | Clk + | R | Direction (1) | R | R | + V | R | Data - | Clk - | R |

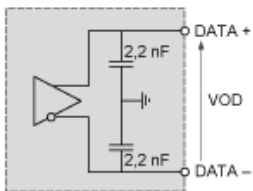
(1) : Clockwise direction, 5 to 0 V

: Anticlockwise direction, 5 to + V

R = Reserved (do not connect)

Technical Description

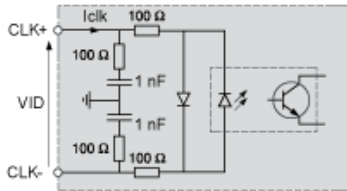
RS 422 Data Output



(1)

(1) $I_{data} = 20 \text{ mA}$ $|VOD| > 2 \text{ V}$

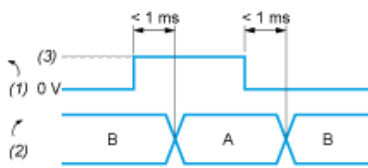
Isolated Clock Input



VID maximum: 5 V

Iclk maximum: 15 mA

DIRECTION Input



A : Anticlockwise

B : Clockwise

(1) DIRECTION input

(2) DIRECTION of counting

(3) V supply