

## Glavno

Range of product	Altivar
Product or component type	EMC input filter
Range compatibility	Altivar 312 Lexium 05 Altivar 31C Altivar 312 Solar Altivar Machine ATV320
Product compatibility	ATV320...C at 2.2 kW, 200...240 V single phase
Product specific application	Radio interference input filter
[In] rated current	22 A
Thermal losses	7.5 Wfor ATV31CU22M2
Network number of phases	Single phase

## Komplementarno

Earth leakage current	80 mA 50 Hz
Network rated voltage	200...240 V
Tolerance	10 %
Product weight	1.13 kg

## Okolina

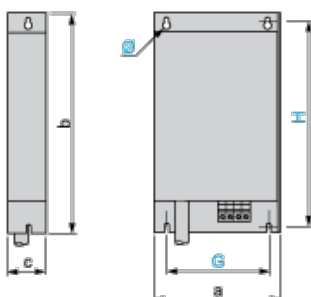
IP degree of protection	IP20 IP41 (upper part)
relative humidity	0...93 % conforming to IEC 68-2-3
ambient air temperature for operation	-10...50 °C
ambient air temperature for storage	-25...70 °C
operating altitude	<= 1000 m without current derating 1000...3000 m with current derating 1 % per 100 m
vibration resistance	1.5 mm peak to peak (f = 3...13 Hz) conforming to IEC 60068-2-6 1 gn (f = 13...150 Hz) conforming to IEC 60068-2-6
shock resistance	15 gnfor 11 ms conforming to EN/IEC 60068-2-27
standards	EN 133200 EN/IEC 61800-3

## Contractual warranty

Warranty period	18 months
-----------------	-----------

## Additional EMC Input Filters

### Dimensions



Informacije dane u ovoj dokumentaciji sadrže opće opise i/ili tehničke karakteristike o performansama ovdje sadržanih proizvoda.  
 Ova dokumentacija nije namijenjena kao zamjena za niti bi se trebala koristiti za određivanje prikladnosti ili pouzdanosti predmetnih proizvoda za konkretne korisničke primjene.  
 Svaki takav korisnik ili integrator dužan je provesti odgovarajuću i potpunu analizu rizika, procjenu i ispitivanje proizvoda u odnosu na odgovarajuću specifičnu primjenu ili uporabu istog.  
 Niti društvo Schneider Electric Industries SAS niti bilo koje od njegovih povezanih poduzeća ili podružnica neće preuzeti obvezu ili snositi odgovornost za pogrešnu upotrebu ovdje sadržanih informacija.

Dimensions in mm

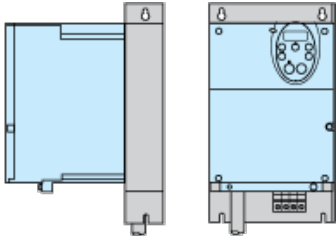
a	b	c	G	H	Ø
140	235	35	120	215	4.5

Dimensions in in.

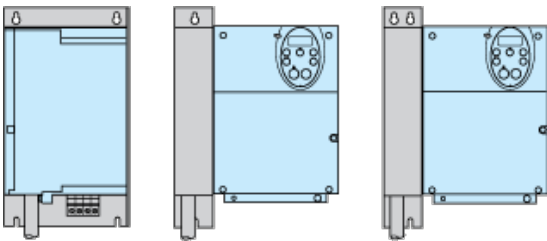
a	b	c	G	H	Ø
5.51	9.25	1.38	4.72	8.46	0.18

## Additional EMC Input Filter

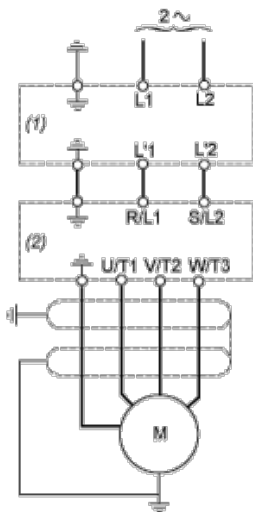
### Mounting the Filter under the Drive



### Mounting the Filter next to the Drive



## Recommended Schema



- (1) Filter
- (2) Drive