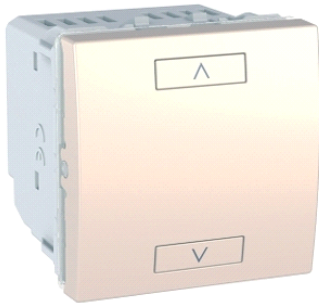


MGU3.574.25

Unica Wireless – kombinirane rolete – 230 V AC –
0... 690 W – 2 m – slonovača



Glavno

Range of product	Unica Wireless
Product or component type	Combined roller blind
Device presentation	Mechanism
Transmission frequency	868.3 MHz
[Ue] rated operational voltage	110/230 V AC (+/- 10 %), 50/60 Hz
Number of modules	2 modules
Fixing mode	Claws
Colour tint	Ivory
Device composition	1 large rocker and 2 narrow rockers Wireless emitter and receiver
Provided equipment	Set of 4 symbols

Komplementarno

Wiring device mounting	Flush
Operating distance	Indoor: 10...50 m Outdoor: <= 300 m
Load type	Motor: 690 W
Protection type	Fuse protection
Connections - terminals	Screw terminals
Clamping connection capacity	<= 2 x 2.5 mm ² for flexible cable(s) <= 2 x 2.5 mm ² for rigid cable(s)
Type of setting	Neutral position
Standards	89/336/EEC 99/5/EEC EN 60669-1 EN 60669-2-1 ETSI EN 300 220 ETSI EN 301 489
Ambient air temperature for operation	-5...50 °C
Relative humidity	20...95 %
Embedding depth	34 mm
Depth	46 mm

Okolina

IP degree of protection	IP20
environmental characteristic	Acetone Alcohol Ammonia Bleach Liquid soap Oil Petrol UV resistant Window-cleaning fluid
environmental health and issues	Halogen free

Offer Sustainability

Green Premium product	Green Premium product
-----------------------	-----------------------

Informacije dane u ovoj dokumentaciji sadrže opće opise i/ili tehničke karakteristike o performansama ovdje sadržanih proizvoda.
Ova dokumentacija nije namijenjena kao zamjena za niti bi se trebala koristiti za određivanje prikladnosti ili pouzdanosti predmetnih proizvoda za konkretne korisničke primjene.
Svaki takav korisnik ili integrator dužan je provesti odgovarajuću i potpunu analizu rizika, procjenu i ispitivanje proizvoda u odnosu na odgovarajuću specifičnu primjenu ili uporabu istog.
Niti društvo Schneider Electric Industries SAS niti bilo koje od njegovih povezanih poduzeća ili podružnica neće preuzeti obvezu ili snositi odgovornost za pogrešnu upotrebu ovdje sadržanih informacija.

Compliant - since 1426 - Schneider Electric declaration of conformity Compliant - since 1426 - Schneider Electric declaration of conformity

Reference not containing SVHC above the threshold Reference not containing SVHC above the threshold

Available Available

Contractual warranty

Warranty period 18 months
