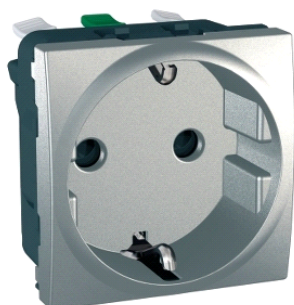


MGU3.057.30

Unica Top/Class – 1 S.O. – 2P+E, rolete, DE – 2 m
– aluminij



Glavno

Range	Unica
Device application	Power supply
Product or component type	Socket-outlet
Aesthetic name	Unica Top - Unica Class
Device presentation	Mechanism
Socket number	1
Outlet poles configuration	2P + E with shutters
Outlet standard	German
Outlet standard description	Side earth

Komplementarno

Rated current	16 A, 250 V AC
Network frequency	50/60 Hz
Number of modules	2 modules
Fixing mode	Clip-in
Colour tint	Aluminium
Connections - terminals	Screwless terminals
Cable cross section	0...4 mm ² - cable stiffness: flexible 0...4 mm ² - cable stiffness: rigid
Minimum load breaking capacity	100 operations 1.25 I _n and 1.1 U _n , cos phi: 0.6
Electrical durability	10000 cycles (cos phi: 0.8)
Insulation resistance	> 5 MOhm @500 V
Dielectric strength	2000 V
Material	Mechanism cover: ASA + PC
Quantity per set	Blister: set of 1
Product certifications	FR.ME63.B02375 AC
Embedding depth	30 mm
Depth	40 mm
Width	45 mm
Height	45 mm

Okolina

ambient air temperature for operation	15...30 °C
ambient air temperature for storage	0...35 °C
IK degree of protection	IK01
IP degree of protection	IP20
environmental characteristic	Acetone Alcohol Ammonia Bleach Liquid soap Oil Petrol UV resistant Window-cleaning fluid
environmental health and issues	Halogen free

Informacije dane u ovoj dokumentaciji sadrže opće opise i/ili tehničke karakteristike o performansama ovdje sadržanih proizvoda. Ova dokumentacija nije namijenjena kao zamjena za niti bi se trebala koristiti za određivanje prikladnosti ili pouzdanosti predmetnih proizvoda za konkretne korisničke primjene. Svaki takav korisnik ili integrator dužan je provesti odgovarajuću i popunnu analizu rizika, procjenu i ispitivanje proizvoda u odnosu na odgovarajuću specifičnu primjenu ili uporabu istog. Niti društvo Schneider Electric Industries SAS niti bilo koje od njegovih povezanih poduzeća ili podružnica neće preuzeti obvezu ili snositi odgovornost za pogrešnu upotrebu ovdje sadržanih informacija.

Offer Sustainability

Green Premium product	Green Premium product
Compliant - since 0702 - Schneider Electric declaration of conformity	Compliant - since 0702 - Schneider Electric declaration of conformity
Reference not containing SVHC above the threshold	Reference not containing SVHC above the threshold
Available	Available
Need no specific recycling operations	Need no specific recycling operations