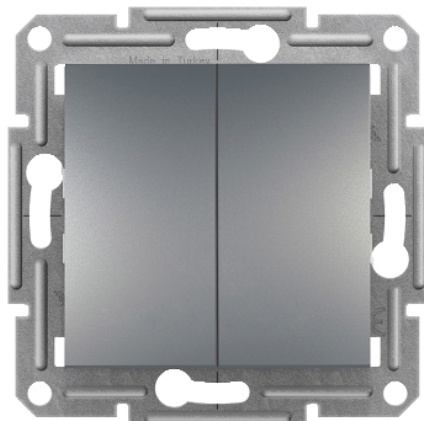


EPH0600362

Asfora - dvostruka izmjenična sklopka - 10AX vijčani priklj. bez okv. - metal



Main

Range	Asfora
Product or component type	Switch
Device presentation	Mechanism with fixing frame
Load type	Load for energy saving lamps with ballast 100 W
Colour tint	Steel
Type of packing	Flow-pack

Complementary

Device mounting	Flush
Switch function	1-pole 2-way
Number of rocker	2
Power range	2300 W
Rated current	10 AX 250 V AC
Connections - terminals	Lift terminals
Number of cables	2 2,5 mm ²
Cable stiffness	Flexible Rigid Solid stranded
Wire stripping length	13,0 mm
Material	ABS (acrylonitrile butadiene-styrene)
Surface finish	Painted
Conductor material	Copper
Fixing mode	Screws or claws 51...70 mm
Maksimalna visina	71 mm
Maksimalna širina	71 mm
Maksimalna dubina	43,0 mm
Projecting depth	15 mm
Neto težina	0,06855 kg

Environment

Standards	IEC 60669-1
Product certifications	VDE
Quality labels	CE
IP degree of protection	IP20
Ambient air temperature for operation	-5...40 °C

The information provided in this documentation contains general descriptions and/or technical characteristics of the performance of the products contained herein. This documentation is not intended as a substitute for and is not to be used for determining suitability or reliability of these products for specific user applications. It is the duty of any such user or integrator to perform the appropriate and complete risk analysis, evaluation and testing of the products with respect to the relevant specific application or use thereof. Neither Schneider Electric Industries SAS nor any of its affiliates or subsidiaries shall be responsible or liable for misuse of the information contained herein.

Offer Sustainability

Status održive ponude	Proizvod Green Premium
Uredba REACH	Izjava REACH
Direktiva EU RoHS	Sukladno Izjava EU RoHS
Bez žive	Da
Informacije o RoHS izuzeću	Da
Propis RoHS za Kinu	Izjava RoHS Za Kinu
Izjava o očuvanju okoliša	Ekološki Profil Proizvoda
WEEE	Proizvod se na tržištima EU mora odlagati u skladu sa specifičnim propisima o prikupljanju otpada; nikako se ne smije odlagati s komunalnim otpadom.