

ATS48C17Q

meki upuštač za asinkroni motor – ATS48 – 162 A – 230..415 V – 37..132 KW



Glavno

| | |
|------------------------------|--|
| Range of product | Altistart 48 |
| Product or component type | Soft starter |
| Product destination | Asynchronous motors |
| Product specific application | Heavy duty industry and pumps |
| Device short name | ATS48 |
| [Us] rated supply voltage | 230...415 V (- 15...10 %) |
| Motor power kW | 75 kW at 230 V (connection to the motor delta terminals) for severe applications 75 kW at 400 V (connection in the motor supply line) for severe applications 90 kW at 230 V (connection to the motor delta terminals) for standard applications 90 kW at 400 V (connection in the motor supply line) for standard applications 110 kW at 400 V (connection to the motor delta terminals) for severe applications 132 kW at 400 V (connection to the motor delta terminals) for standard applications 37 kW at 230 V (connection in the motor supply line) for severe applications 45 kW at 230 V (connection in the motor supply line) for standard applications |
| Power dissipation in W | For severe applications 391 W For standard applications 479 W |
| Utilisation category | AC-53A |
| Type of start | Start with torque control (current limited to 5 In) |
| IcL starter rating | 170 A (connection in the motor supply line) for standard applications 170 A (connection in the motor supply line) for severe applications 294 A (connection to the motor delta terminals) for severe applications 294 A (connection to the motor delta terminals) for standard applications |
| IP degree of protection | IP00 |

Komplementarno

| | |
|------------------------------------|---|
| Assembly style | With heat sink |
| Function available | External bypass (optional) |
| Supply voltage limits | 195...456 V |
| Supply frequency | 50...60 Hz (- 5...5 %) |
| Network frequency | 47.5...63 Hz |
| Device connection | In the motor supply line To the motor delta terminals |
| Factory setting current | 162 A |
| [Uc] control circuit voltage | 220 - 15 % to 415 + 10 %, 50/60 Hz |
| Control circuit consumption | 30 W |
| Discrete output number | 2 |
| Discrete output type | (LO1) logic output 0 V common configurable (LO2) logic output 0 V common configurable (R1) relay outputs fault relay NO (R2) relay outputs end of starting relay NO (R3) relay outputs motor powered NO |
| Output absolute accuracy precision | +/- 5 % |
| Minimum switching current | Relay outputs 10 mA at 6 V DC |

Informacije dane u ovoj dokumentaciji sadrže opće opise i/ili tehničke karakteristike o performansama ovdje sadržanih proizvoda. Ova dokumentacija nije namijenjena kao zamjena za niti bi se trebala koristiti za određivanje prikladnosti ili pouzdanosti predmetnih proizvoda za konkretne korisničke primjene. Svaki takav korisnik ili integrator dužan je provesti odgovarajuću i poplunu analizu rizika, procjenu i ispitivanje proizvoda u odnosu na odgovarajuću specifičnu primjenu ili uporabu istog. Niti društvo Schneider Electric, Industries SAS niti bilo koje od njegovih povezanih poduzeća ili podružnica neće preuzeti obvezu ili snositi odgovornost za pogrešnu upotrebu ovdje sadržanih informacija.

| | |
|-----------------------------|--|
| Maximum switching current | Logic output 0.2 A at 30 V DC Relay outputs 1.8 A at 230 V AC inductive load, cos phi = 0.5, L/R = 20 ms Relay outputs 1.8 A at 30 V DC inductive load, cos phi = 0.5, L/R = 20 ms |
| Discrete input number | 5 |
| Discrete input type | PTC, 750 Ohm at 25 °C (Stop, Run, LI3, LI4) logic, <= 8 mA 4300 Ohm |
| Discrete input voltage | 24 V (<= 30 V) |
| Discrete input logic | Positive logic (Stop, Run, LI3, LI4) state 0 < 5 V and <= 2 mA, state 1 > 11 V and >= 5 mA |
| Supply inrush current | Adjustable 0.4...1.3 Icl |
| Analogue output type | (AO) current output 0-20 mA or 4-20 mA <= 500 Ohm |
| Communication port protocol | Modbus |
| Connector type | 1 RJ45 |
| Communication data link | Serial |
| Physical interface | RS485 multidrop |
| Transmission rate | 4800, 9600 or 19200 bps |
| Installed device | 31 |
| Protection type | Phase failure (line) Thermal protection (motor) Thermal protection (starter) |
| Marking | CE |
| Type of cooling | Forced convection |
| Operating position | Vertical +/- 10 degree |
| Height | 340 mm |
| Width | 200 mm |
| Depth | 265 mm |
| Product weight | 12.4 kg |
| Power range | 30...50 kW at 200...240 V 3 phases 55...100 kW at 380...440 V 3 phases 55...100 kW at 200...240 V 3 phases 110...220 kW at 380...440 V 3 phases |
| Motor starter type | Soft starter |

Okolina

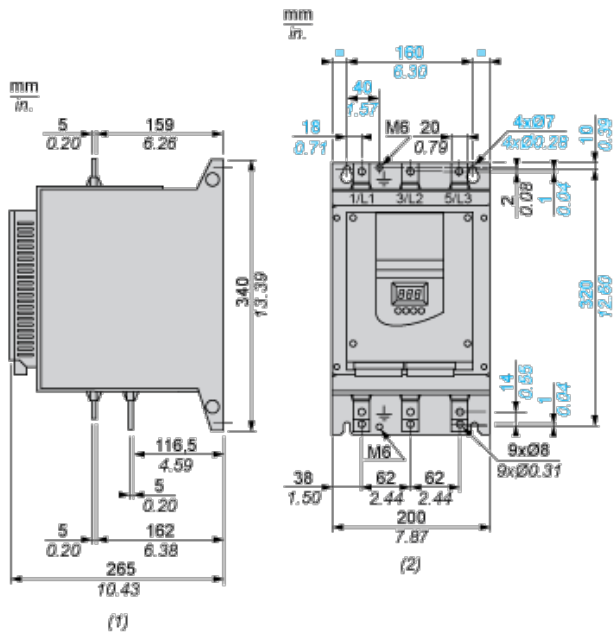
| | |
|---------------------------------------|--|
| electromagnetic compatibility | Conducted and radiated emissions conforming to IEC 60947-4-2 level A Conducted and radiated emissions conforming to IEC 60947-4-2 level B Damped oscillating waves conforming to IEC 61000-4-12 level 3 Electrostatic discharge conforming to IEC 61000-4-2 level 3 Immunity to electrical transients conforming to IEC 61000-4-4 level 4 Immunity to radiated radio-electrical interference conforming to IEC 61000-4-3 level 3 Voltage/current impulse conforming to IEC 61000-4-5 level 3 |
| standards | EN/IEC 60947-4-2 |
| product certifications | CCC CSA C-Tick DNV GOST NOM 117 SEPRO TCF UL |
| vibration resistance | 1 gn (f = 13...200 Hz) conforming to EN/IEC 60068-2-6 1.5 mm (f = 2...13 Hz) conforming to EN/IEC 60068-2-6 |
| shock resistance | 15 gnfor 11 ms conforming to EN/IEC 60068-2-27 |
| noise level | 50 dB |
| pollution degree | Level 3 conforming to IEC 60664-1 |
| relative humidity | 0...95 % without condensation or dripping water conforming to EN/IEC 60068-2-3 |
| ambient air temperature for operation | -10...40 °C without derating -10...40 °C without derating 40...60 °C with current derating of 2 % per °C |
| ambient air temperature for storage | -25...70 °C |
| operating altitude | <= 1000 m without derating > 1000...2000 m with current derating of 2.2 % per additional 100 m |

Contractual warranty

Warranty period

18 months

Dimensions



(1) Right View

(2) Front View

Clearance

